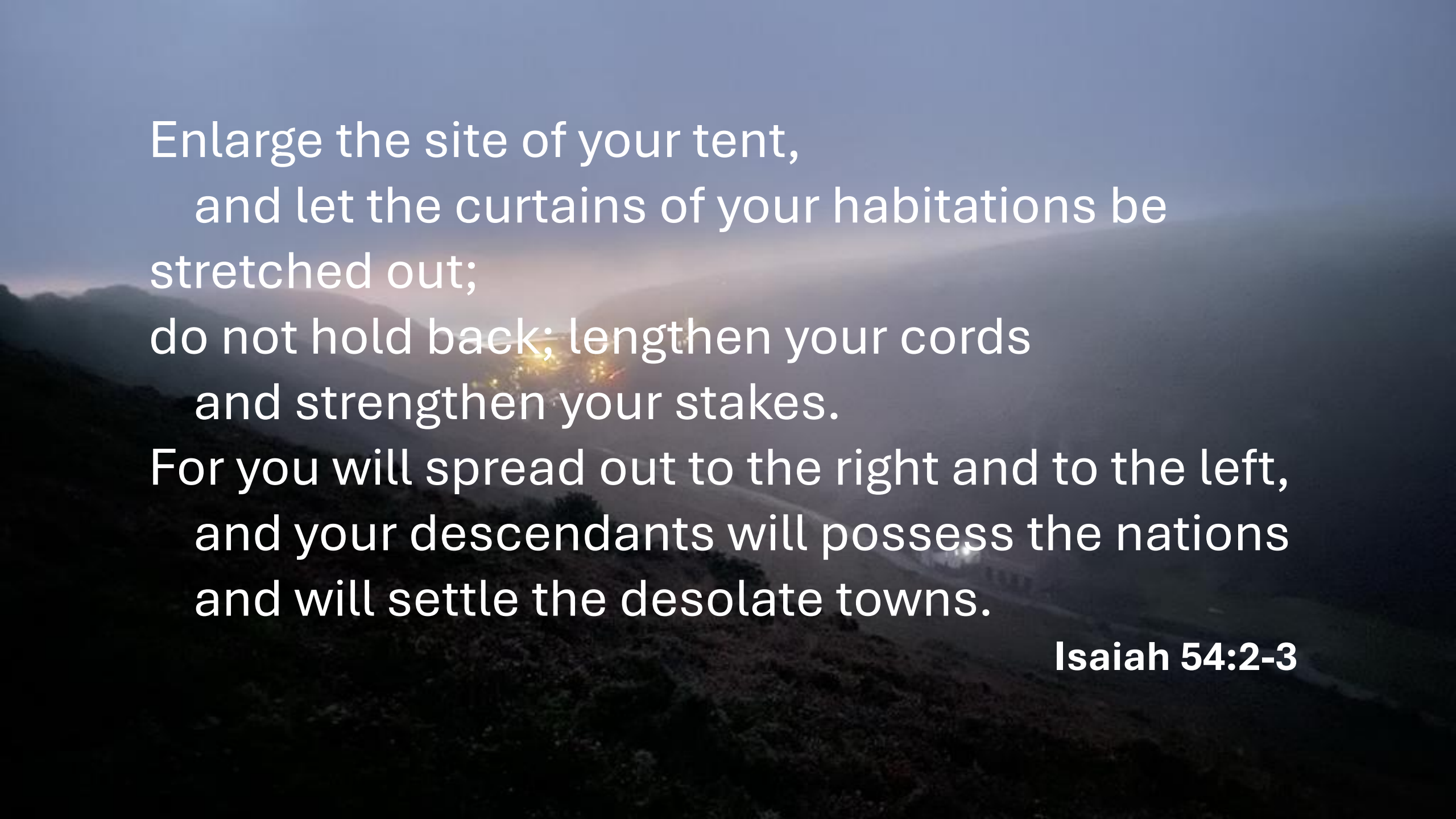


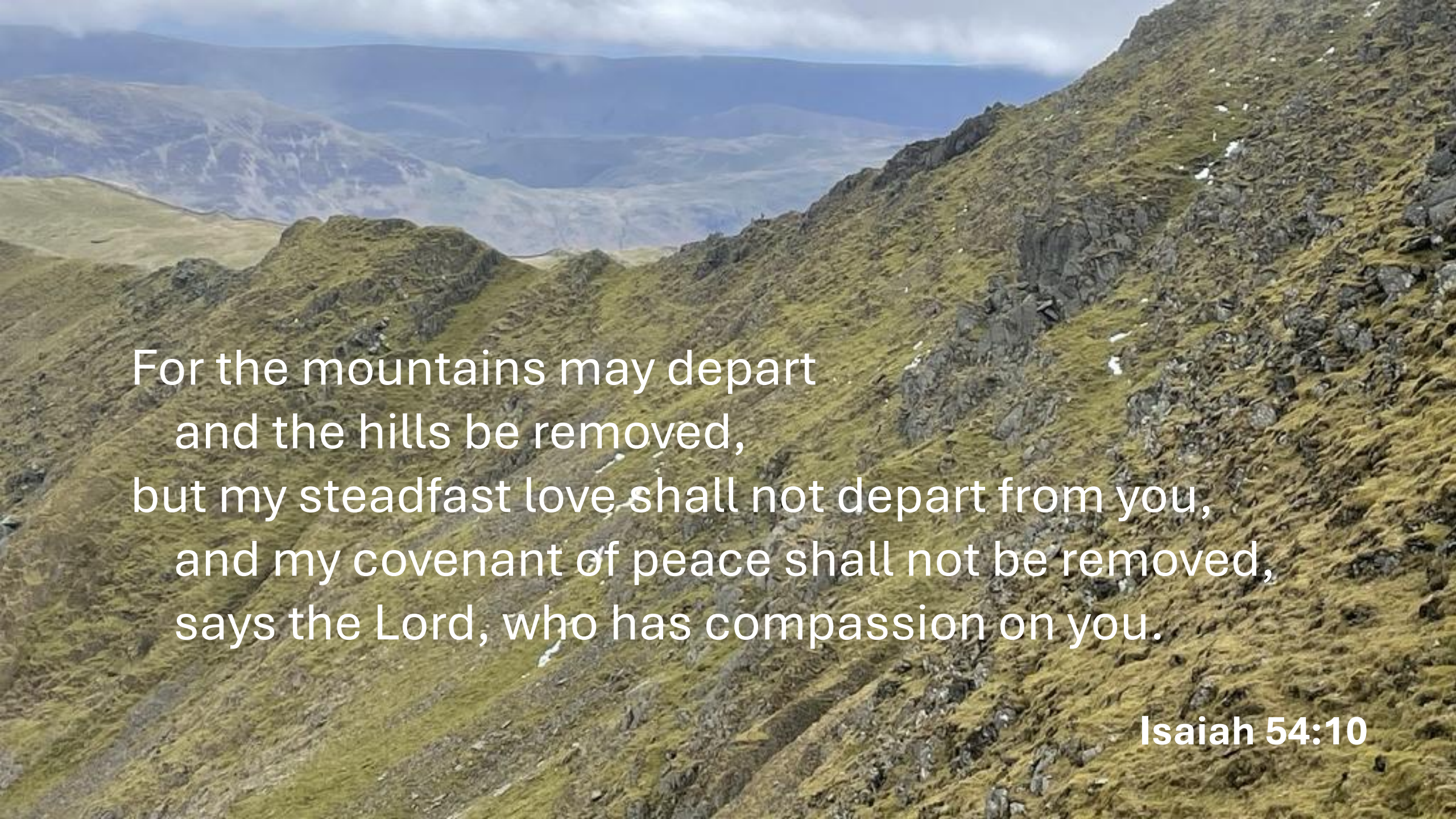


Isaiah 54
post-desert vision...



Enlarge the site of your tent,
and let the curtains of your habitations be
stretched out;
do not hold back; lengthen your cords
and strengthen your stakes.
For you will spread out to the right and to the left,
and your descendants will possess the nations
and will settle the desolate towns.

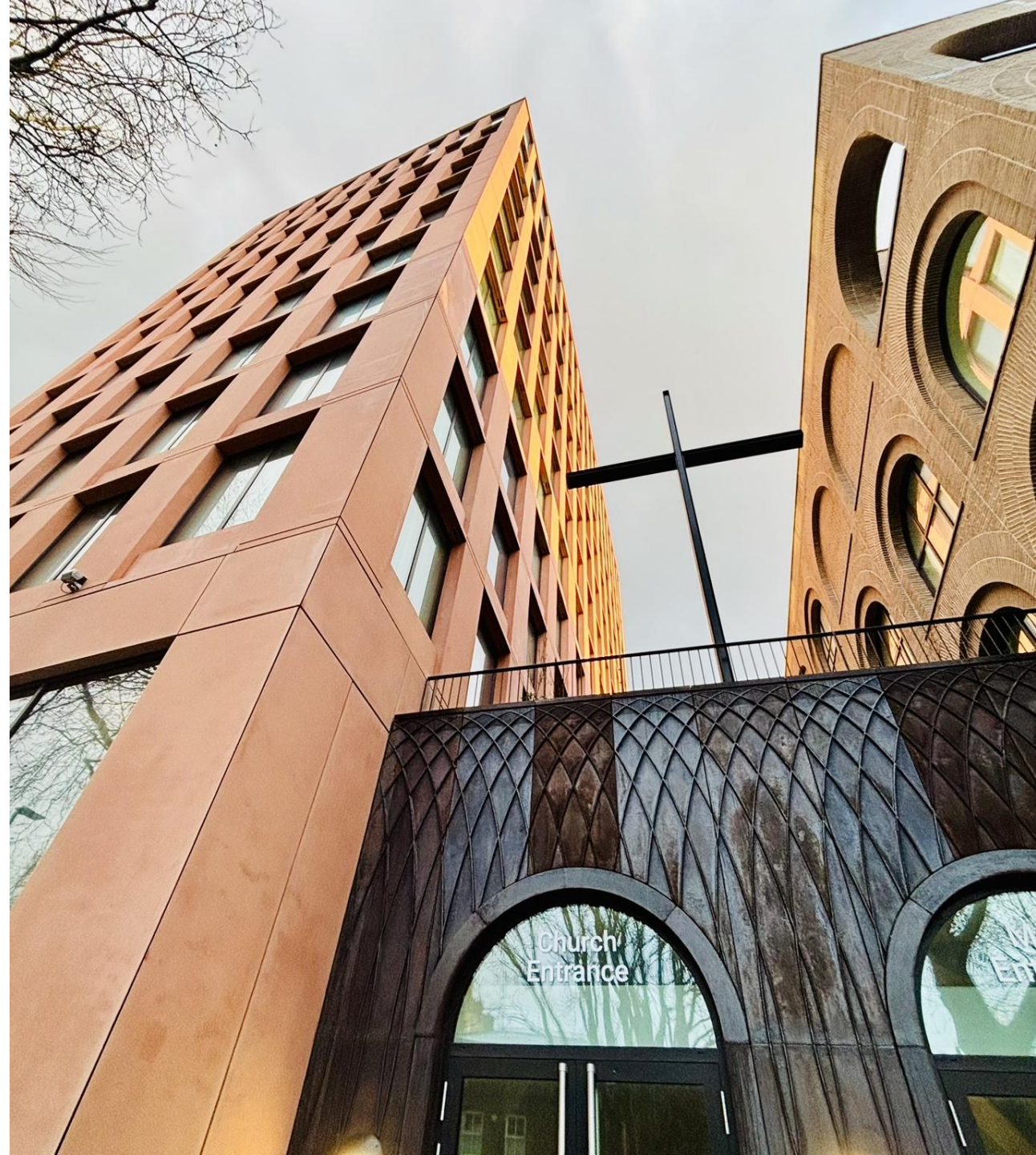
Isaiah 54:2-3

The background image is a high-angle, wide shot of a mountainous landscape. The foreground and middle ground consist of steep, rocky slopes covered in patches of green moss and small white snow or ice. The terrain is rugged and uneven. In the far distance, more mountain ranges are visible, their peaks softened by a layer of atmospheric haze or low clouds. The sky is filled with heavy, grey clouds, suggesting an overcast day. The overall mood is somber and majestic.

For the mountains may depart
and the hills be removed,
but my steadfast love shall not depart from you,
and my covenant of peace shall not be removed,
says the Lord, who has compassion on you.

Isaiah 54:10

National CofE vision...
A church that is
SIMPLER,
HUMBLER,
BOLDER





3 National CofE Priorities

- To become a church of **missionary disciples**
- To be a church where **mixed ecology is the norm**
- To be a church that is **younger and more diverse**

CofE Birmingham Vision...



Bournville Parish Church, St Francis



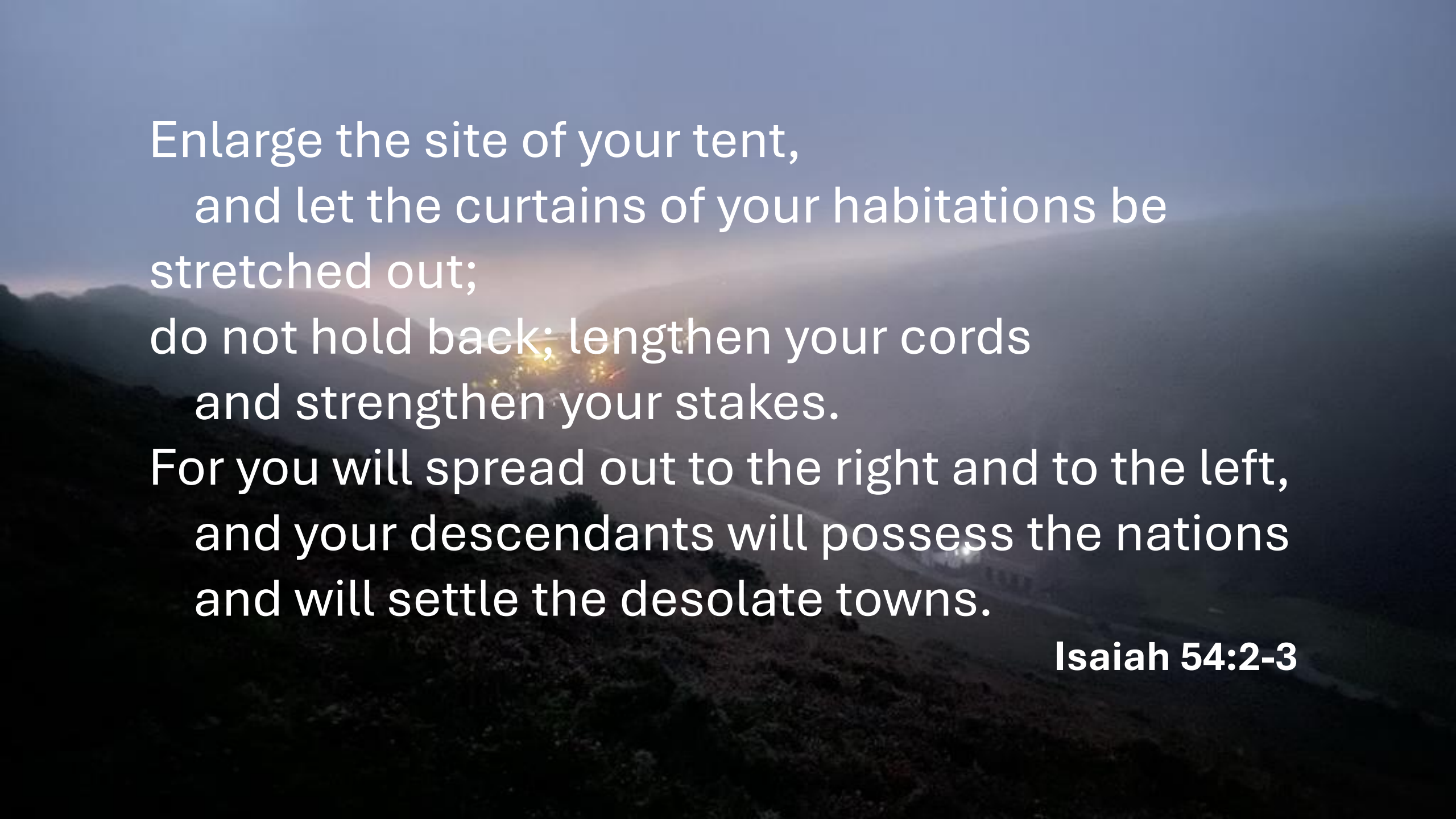
St George's, Edgbaston

GROWING CHURCHES
(AND FLOURISHING SCHOOLS)
AT THE HEART OF EACH COMMUNITY

Knowle Parish Church is growing at the heart of the community.

Q: Are there other communities in the diocese whose Kingdom growth could be enabled by KPC?





Enlarge the site of your tent,
and let the curtains of your habitations be
stretched out;
do not hold back; lengthen your cords
and strengthen your stakes.
For you will spread out to the right and to the left,
and your descendants will possess the nations
and will settle the desolate towns.

Isaiah 54:2-3



Q: what does it mean for KPC to resolve to,

Enlarge the site of your tent?

To let the curtains of your habitations be stretched out?

Not to hold back, lengthen cords, strengthen stakes?

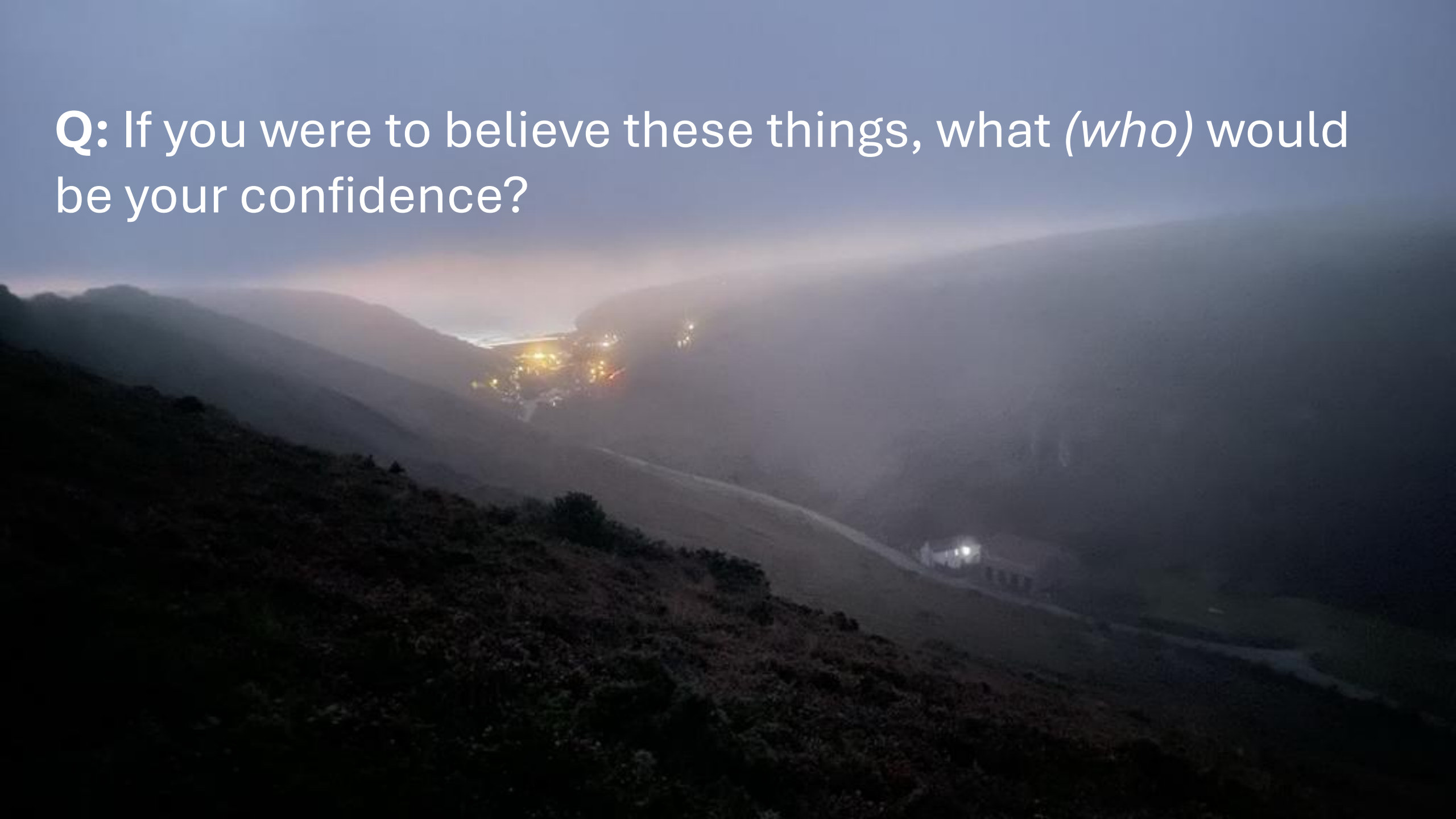
A misty, mountainous landscape at dawn or dusk. The sky is a pale, hazy blue. In the distance, a small town or village is visible in a valley, with several lights glowing. The foreground is a dark, silhouetted hillside with some vegetation. The overall atmosphere is quiet and somewhat somber.

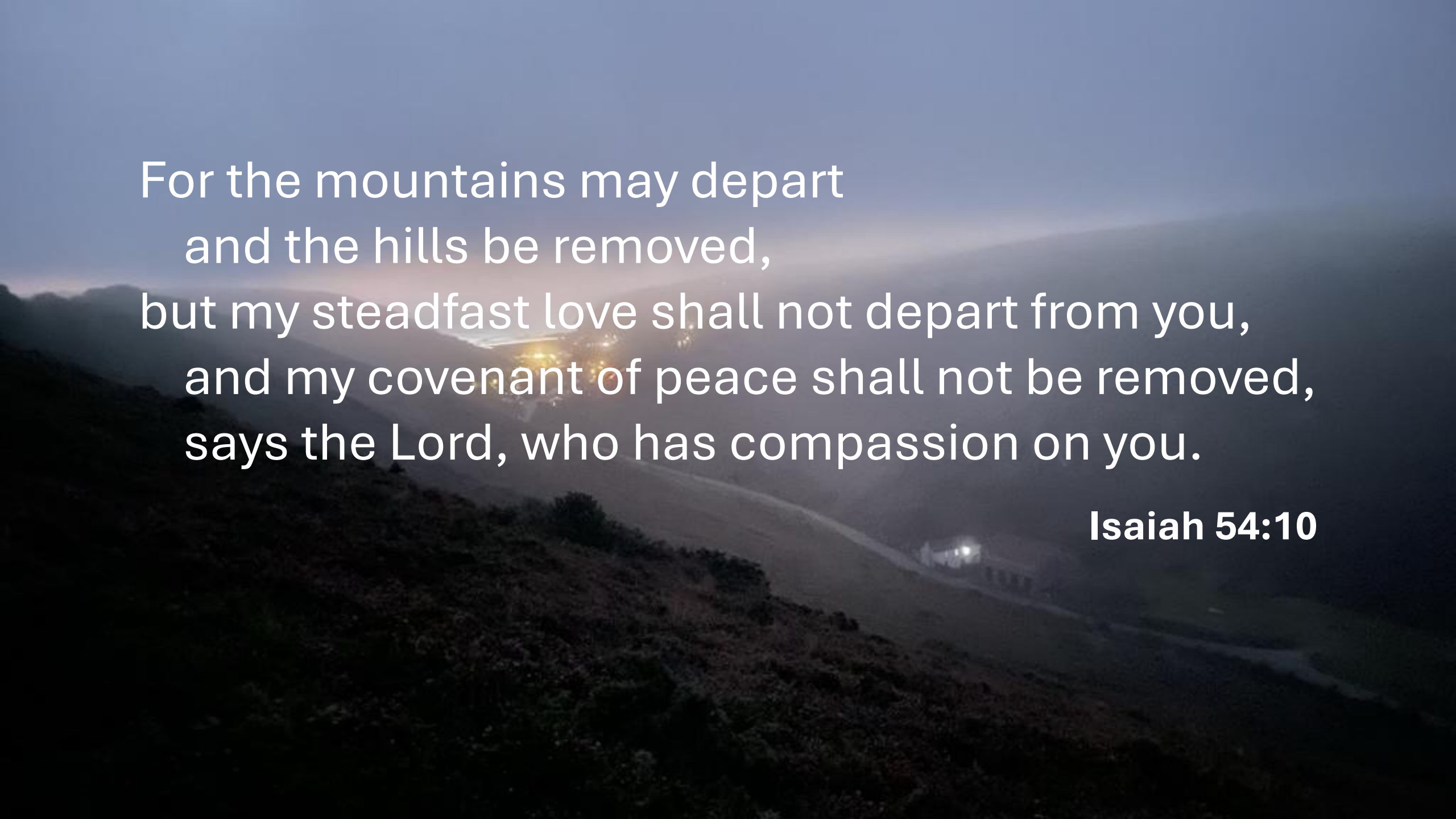
Q: what does it mean for KPC to believe that,

*‘you **will** spread out to the right and left?’*

‘your descendants will possess nations and settle desolate towns?’

Q: If you were to believe these things, what (*who*) would be your confidence?



A misty, mountainous landscape at dawn or dusk. The foreground is a dark, silhouetted hillside. In the middle ground, a valley is visible with a small town or village, its lights glowing through the mist. The background shows more distant, hazy mountains under a soft, blue sky.

For the mountains may depart
and the hills be removed,
but my steadfast love shall not depart from you,
and my covenant of peace shall not be removed,
says the Lord, who has compassion on you.

Isaiah 54:10

Q: As KPC, what tangible steps do you sense that the Lord is calling you to take in the coming months?

